

# EAST MIDLANDS INTERNATIONAL RECRUITMENT



• **April 24 Newsletter** •

## Did you know up to £7,500 of grant funding could be yours!

**DO YOU HAVE A SPONSOR LICENCE?  
HAVE YOU HIRED INTERNATIONAL RECRUITS  
DURING 2023-2024?**



Please complete the online application form:  
**[CLICK HERE](#)** without delay!



**IF YOU KNOW OF A CARE PROVIDER IN THE EAST MIDLANDS WHO MAY QUALIFY FOR THIS GRANT,  
PLEASE FORWARD THESE DETAILS TO THEM!**



### **International Recruitment Toolkit for Social Care**

By following these guidelines, adult social care providers can ensure that their international recruitment practices are ethical, transparent, and effective, ultimately contributing to the delivery of high-quality care services and the well-being of both staff and service users.



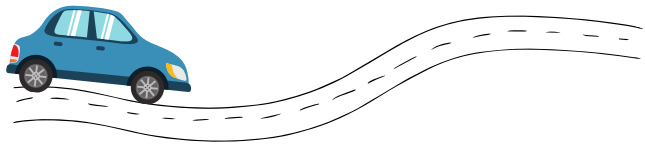
### **Grant Funding Applications**

We're reaching out to remind you to check your email's junk or spam folder for any messages regarding your recent grant application.

Please ensure you're on the lookout for emails from [info@eastmidscare.co.uk](mailto:info@eastmidscare.co.uk). It's crucial to respond promptly to these emails to avoid any delays or potential closure of your application.

**WE DON'T WANT YOU TO MISS OUT!**

Any questions? Email: [info@eastmidscare.co.uk](mailto:info@eastmidscare.co.uk)



# Driving in the UK

We are excited to introduce our latest initiative: a lending library program tailored to support international recruits in the social care sector who are eager to drive in the UK.

Our lending library features Theory Test Books designed to help learners navigate the key aspects of UK road rules and pass their driving exams with confidence. From road signs to hazard perception, our handpicked collection covers everything you need to know.

But it's not just about books; it's about community. After benefiting from the resources, recipients are encouraged to pass them on to others within their network, fostering a culture of support and self-sufficiency.

Ready to kickstart your driving journey? Contact us at [info@eastmidscare.co.uk](mailto:info@eastmidscare.co.uk) to borrow a Theory Test Book from our lending library today!

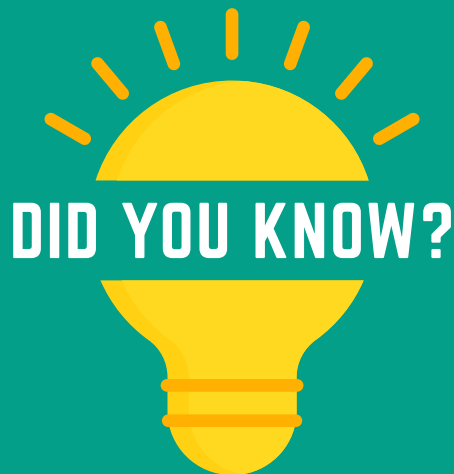
**Driving in the UK**  
Changing over your licence and taking your test

The United Kingdom is renowned for having very rigid driving regulations, but thanks to this, it also has some of the safest roads to drive on.

Alongside this, still caught up in the aftermath of the COVID-19 pandemic, there is currently a significant wait for all driving related tasks such as waits for tests, instructors and communications. Unless you're from the list of approved countries, you have 364 days from entry to the UK to gain your full UK licence. In the meantime, you can drive on your international licence.

To keep it as concise as possible, following these basic steps is the best preparation you can take to be safely driving in the UK as quick as possible.

- Learn your theory before you arrive, if you're already here then get on it now!  
*There are many free apps and websites with preparation, learning and mock test materials on to help you such as the government website Theory Test practice and more!*
- On arrival apply immediately for your provisional licence, preferably online to reduce processing times.
- Whilst waiting for provisional ensure eyesight is at UK driving standards, take relevant steps if not.  
*Check the eyesight standards here*
- Enquire and book theory test once your provisional licence has arrived.  
*Do that here*
- Enquire and book practical lessons whilst completing theory.  
*You can search for driving instructors using the Government website Google or ask social media for recommendations*
- Book an intensive practical course where possible.  
*This can help reduce your learning time, and is really beneficial if you already know how to drive - but some people learn better over time*
- Book test at the earliest convenience under driving instructors' advice (use cancellation sites if ready immediately)  
*Do this here!*



UKVI are replacing physical documents such as biometric Residence Permits, biometric residence cards (BRC), passport endorsements, such as indefinite leave to enter wet ink stamps, vignette stickers in passports, such as entry clearance or visa vignettes with eVisas which is an online record of your immigration status.

You do not have to do anything at the moment until you are contacted by UKVI but will need to have applied for a eVisa before the end of this year.

Information on eVisa is here:

[MORE INFO](#)

The following is a video on .GOV about what is an eVisa:

[WATCH NOW](#)

You can also sign up for updates which will tell you when you need to apply for the eVisa.

[SIGN UP](#)



**Be a part of our Community of Care launch this June with our Traditional English Garden Parties! Indulge in tea, sandwiches, and the classic scone with cream and jam plus various garden games.**

**If you think your care home in the East Midlands would be a perfect venue for one of these events, we'd love to hear from you! Please get in touch via email: [info@eastmidscare.co.uk](mailto:info@eastmidscare.co.uk)**



**Any questions? Email: [info@eastmidscare.co.uk](mailto:info@eastmidscare.co.uk)**



We would love to hear and share your good news stories in regards to international recruits.

Please email them to us!

[info@eastmidscare.co.uk](mailto:info@eastmidscare.co.uk)

**We will be hosting various job fairs around the East Midlands for *EVERYONE* in the adult social care sector - More details to follow!**



The Citizens Advice are available to help if you have any issues with regards to living and working in the UK. Please contact them [here](#).



- **Brand New Website!**
- **Webinar Dates!**
  - **How to evidence genuine vacancies on a CoS application.**
  - **In talks with Lincoln Road Safety Partnership regards driving standards in the UK.**



Stay ahead with the latest news and opportunities in international recruitment! Follow us on [Facebook](#), [LinkedIn](#) and subscribe to our [YouTube](#) channel. You can also visit our [website](#) for regular updates and industry insights!

Any questions? Email: [info@eastmidscare.co.uk](mailto:info@eastmidscare.co.uk)